

Overview:

The purpose of this project is to replace the compound slide on my Grizzly G0750G gunsmithing lathe with a solid tool post.

The reasons for this modification is to remove the weakness/slop of the compound slide which greatly improves the rigidity of the cutting tool allowing:

- 1. Greater depth of cuts.
- 2. Eliminates chatter caused by the compound.
- 3. Much improves tool placement precision.
- 4. DRO tool indexing is now possible.

Parts List				
Qty	Size	Description	Material	Part Number
1	2.5 x 4.79 x 5.25	Body	Gray Cast Iron	McMaster-Carr #8023K35
4	3/8-16 x 1.25	Socket Head Cap Screw	Steel	McMaster-Carr #91251A628

PROJECT

Grizzly Solid Tool Post

TITLE

**Body V1
Notes & BOM**

APPROVED

SIZE

CODE

DWG NO

REV

CHECKED

A

DRAWN

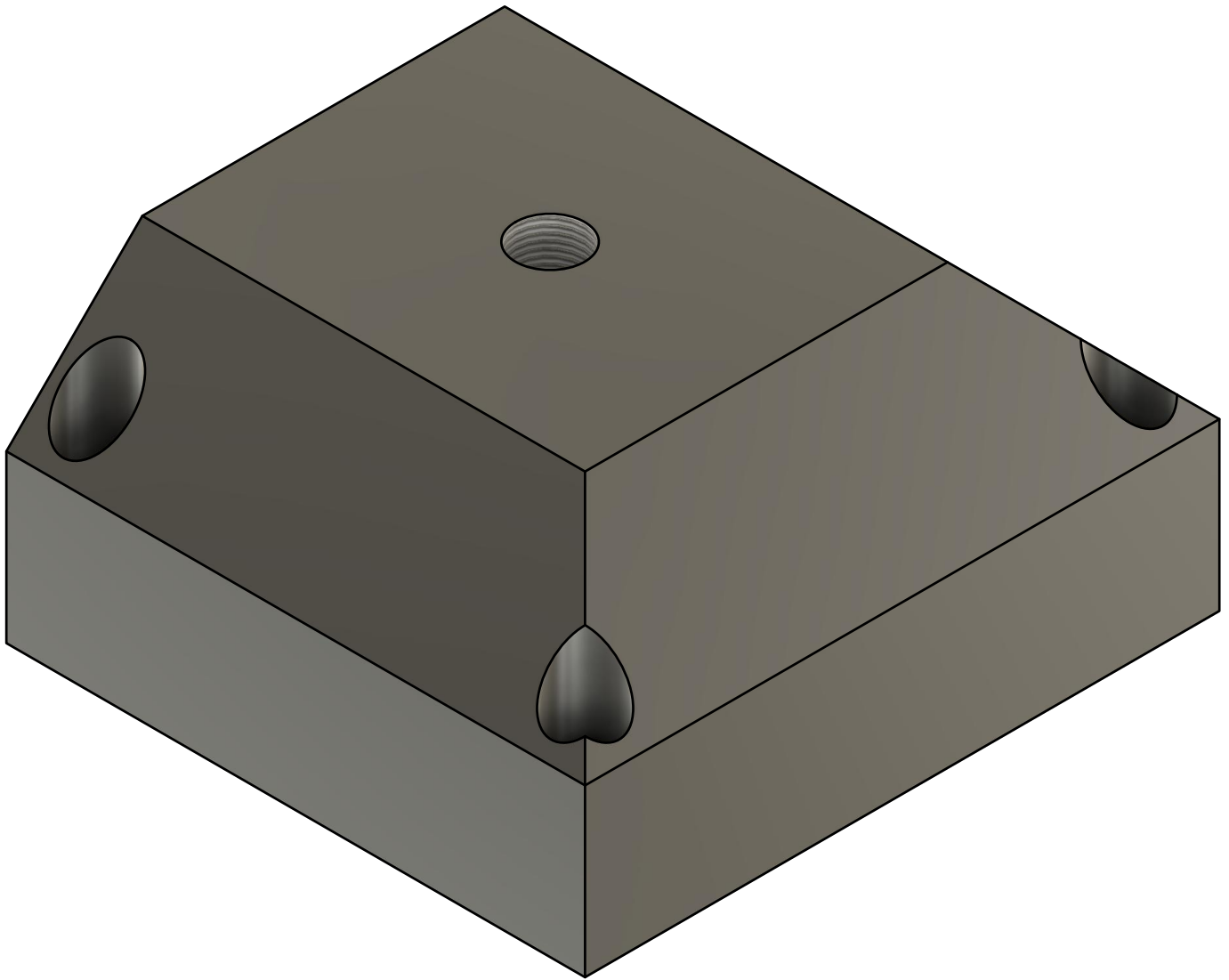
Steve Nance

8/2/2020

SCALE 1:1

WEIGHT

SHEET 1/6



PROJECT

Grizzly Solid Tool Post

TITLE

**Body V1
Isometric Projection**

APPROVED

SIZE

CODE

DWG NO

REV

CHECKED

A

DRAWN

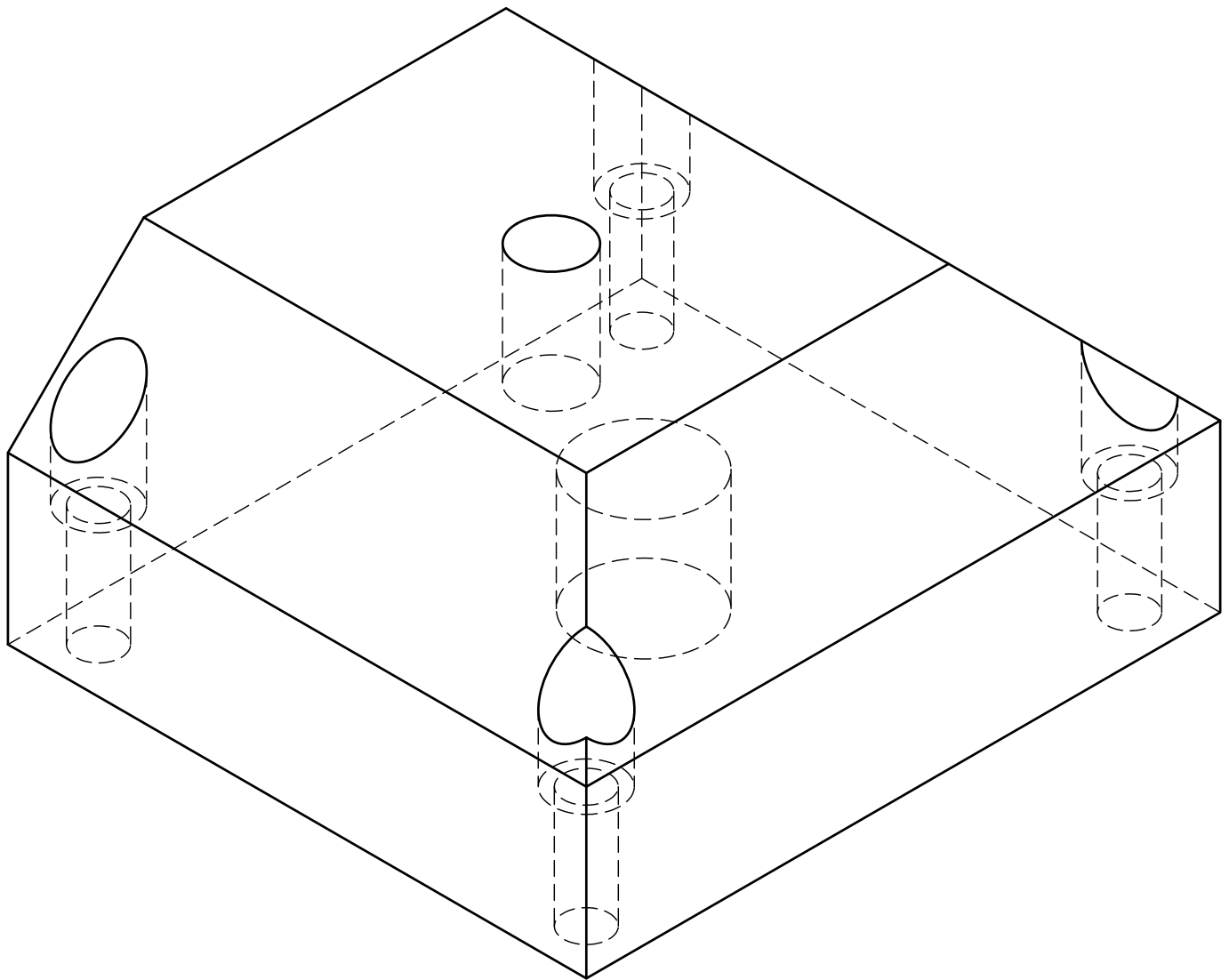
Steve Nance

8/2/2020

SCALE 1:1

WEIGHT

SHEET 2/6



PROJECT

Grizzly Solid Tool Post

TITLE

Body V1
Isometric Projection
 (wire frame)

APPROVED

SIZE

CODE

DWG NO

REV

CHECKED

A

DRAWN

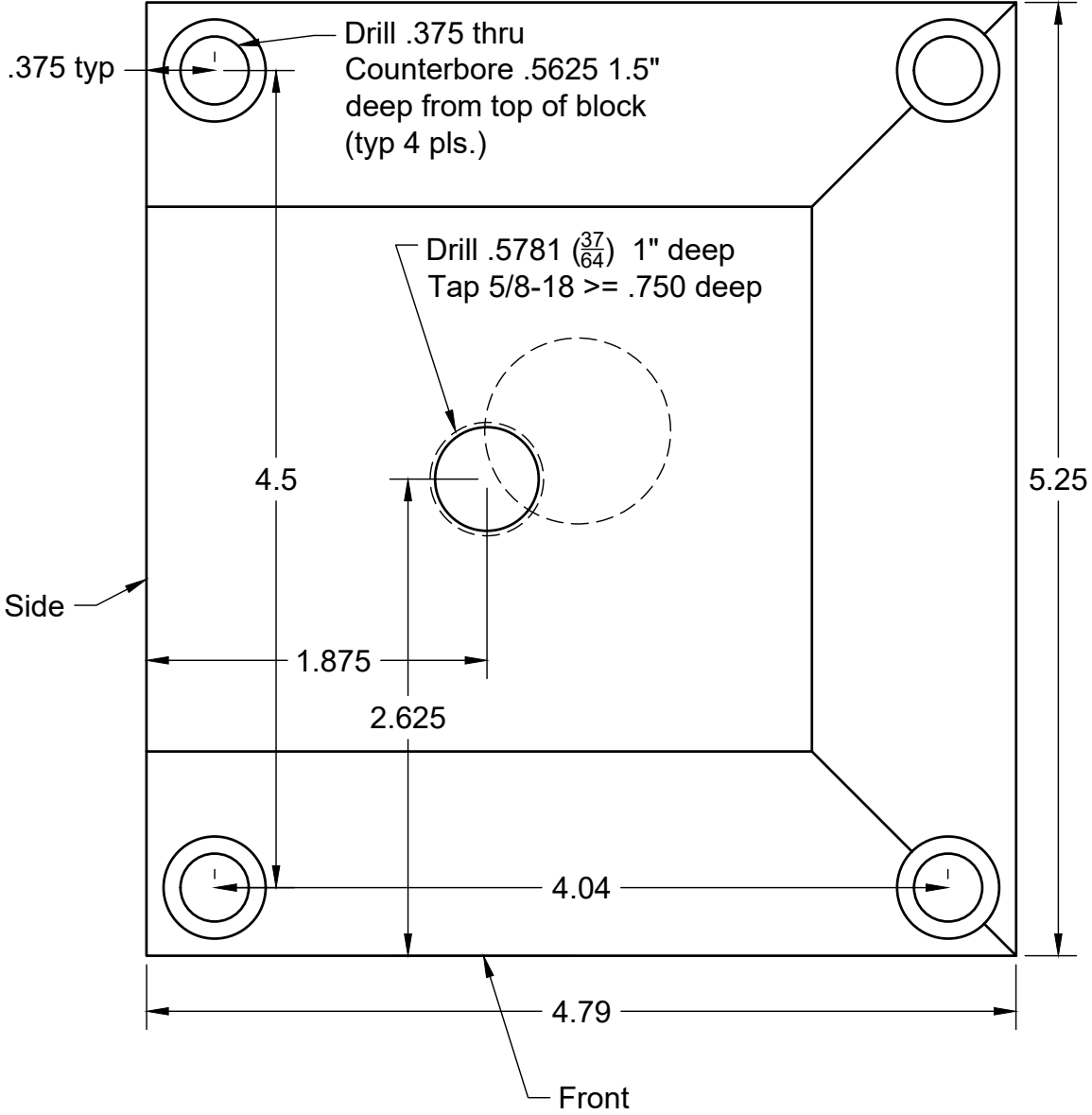
Steve Nance

8/2/2020

SCALE 1:1

WEIGHT

SHEET 3/6



PROJECT

Grizzly Solid Tool Post

TITLE

Body V1 Top View

APPROVED

SIZE

CODE

DWG NO

REV

CHECKED

A

DRAWN

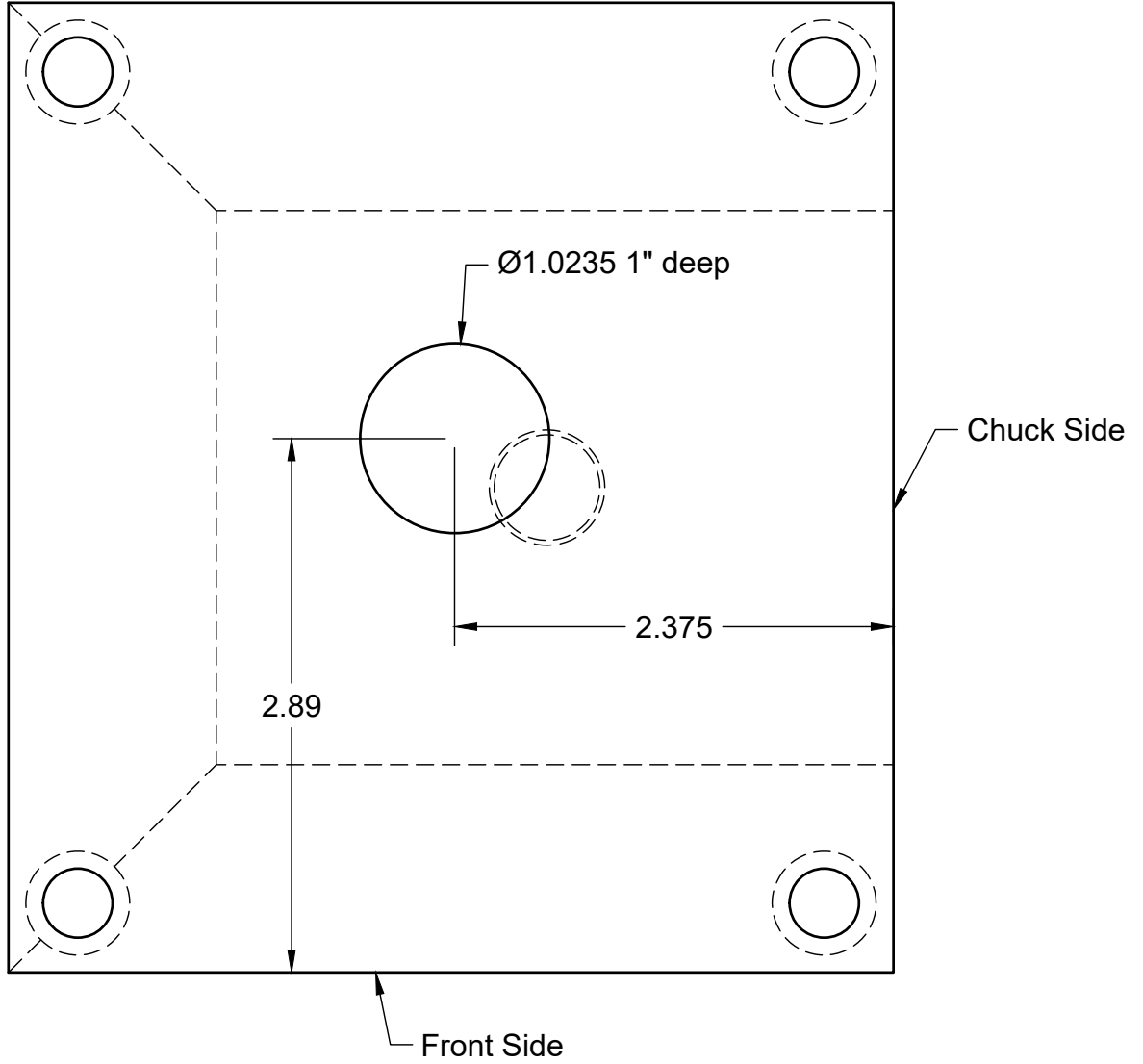
Steve Nance

8/2/2020

SCALE 1:1

WEIGHT

SHEET 4/6



PROJECT

Grizzly Solid Tool Post

TITLE

**Body V1
Bottom View**

APPROVED

SIZE

CODE

DWG NO

REV

CHECKED

A

DRAWN

Steve Nance

8/2/2020

SCALE 1:1

WEIGHT

SHEET 6/6